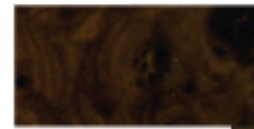




Walnut



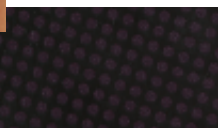
Teak



Meleeze



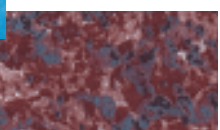
Carbon Fiber



Oceano



Granito Rosso



Marmo Azzurro



Marmo Rosso



ALU DESIGN



- Professional Signage
- Entrance Nameplates

- Walnut, Teak and Meleeze can even be used in exterior applications
- When saw cutting, place material face down to protect finish

Surface colour	1.5mm
walnut	19048 ■
teak	19049 ■
meleeze	19044 ■
carbon fiber	19047 ■
oceano	19051 ■
granito rosso	19050 ■
marmo azzurro	19046 ■
marmo rosso	19045 ■

■ on stock

Specifications

Surface	Varies
Engraving depth	0.1mm
Standard size (mm)	990 x 500
Composition	Aluminum

Capabilities

Interior	■	■*	Exterior
Shear		■	Saw
Silk screen			Hot stamp
Scratch resistant			Flexible
Break resistant	■	■*	UV resistant
Min. temp.	-40° C	50° C	Max. temp.

* Walnut, teak and meleeze only.