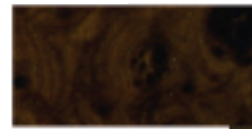




Walnut



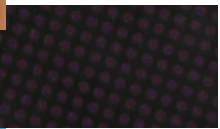
Teak



Meleeze



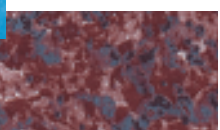
Carbon Fiber



Oceano



Granito Rosso



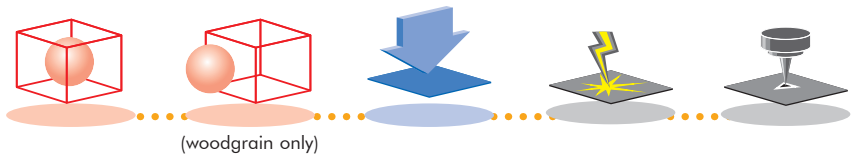
Marmo Azzurro



Marmo Rosso



# ALU DESIGN



- Professional Signage
- Entrance Nameplates

- Walnut, Teak and Meleeze can even be used in exterior applications
- When saw cutting, place material face down to protect finish

Surface colour	1.5mm
walnut	19048 ■
teak	19049 ■
meleeze	19044 ■
carbon fiber	19047 ■
oceano	19051 ■
granito rosso	19050 ■
marmo azzurro	19046 ■
marmo rosso	19045 ■

■ on stock

## Specifications

Surface	<b>Varies</b>
Engraving depth	<b>0.1mm</b>
Standard size (mm)	<b>990 x 500</b>
Composition	<b>Aluminum</b>

## Capabilities

Interior	■	■*	Exterior
Shear		■	Saw
Silk screen			Hot stamp
Scratch resistant			Flexible
Break resistant	■	■*	UV resistant
Min. temp.	-40° C	50° C	Max. temp.

\* Walnut, teak and meleeze only.